

# SPARTUS®



**SPARTUS® Easy 1500CL / 2000CL**  
laser cleaning machines

## ADVANTAGES OF LASER CLEANING

**Power** - its powerful capability enables quick and effective cleaning, even of the toughest contaminants.

**Technology** - the use of laser light allows for precise targeting and removal of unwanted layers without physical contact with the material.

**Safety and Ecology** - laser cleaning technology is safe for the user and eliminates the need for chemicals, making it environmentally friendly.

**Ease of Use** - an intuitive control panel and ergonomic design make the SPARTUS® laser cleaner easy to use, even for less experienced operators.

**Versatility of Applications** - ideal for renovation, maintenance, and surface preparation for further processing.

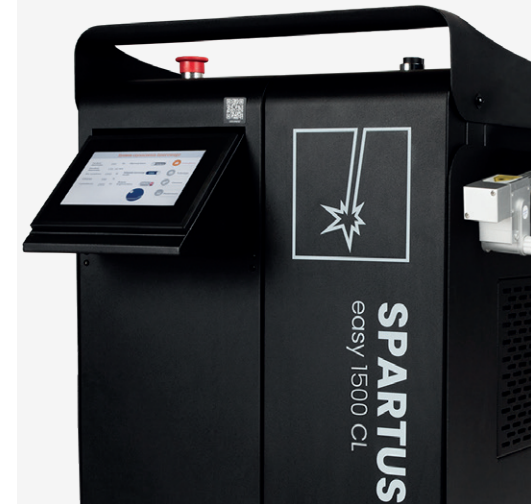
### » CLEANING HEAD SPARTUS® C220

The exceptionally lightweight and comfortable SPARTUS® C220 cleaning head is a key component of the laser cleaners. Made from lightweight materials, it ensures ease of use even during extended operations. Various focusing lenses allow for precise adjustment of the cleaning width to 150 mm, 225 mm, or 300 mm, depending on project requirements. This versatility makes the C220 head extremely effective across various industrial applications, enabling quick and accurate cleaning of metal surfaces.



## The most advanced and efficient metal cleaning technology

**SPARTUS® Easy 1500CL/2000CL** is an advanced laser cleaning device designed for professionals in the metal processing industry. This machine is the ideal solution for fast and efficient removal of rust, paint, contaminants, and other unwanted layers from a variety of metal surfaces. With modern fiber laser technology, **SPARTUS® 1500CL/2000CL** ensures high-precision cleaning without damaging the base layer of the metal.

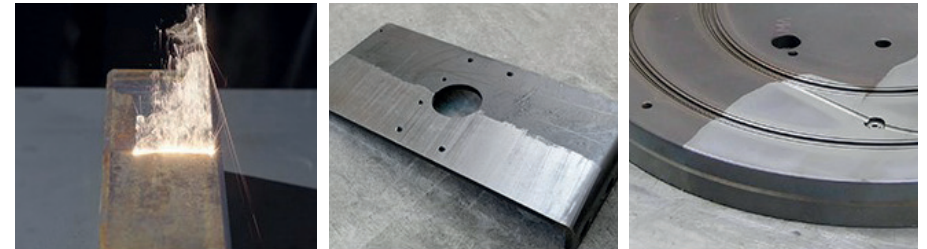
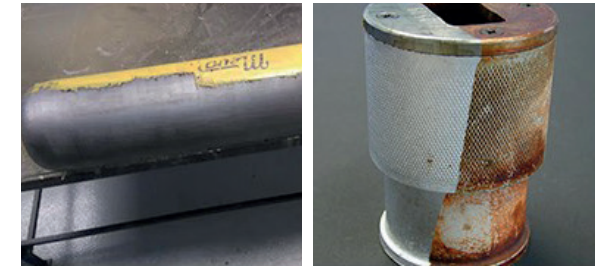


# EASY 1500CL EASY 2000CL



# APPLICATION OF A LASER CLEANING MACHINE

**IDEAL FOR CLEANING METALS ACROSS VARIOUS INDUSTRIES,** including automotive, aviation, machinery manufacturing, and many others. It also performs exceptionally in renovation workshops and maintenance facilities.



TECHNICAL DETAILS	EASY 1500CL	EASY 2000CL
Output power	1 500 W	2 000 W
Input	230 V	230 V
Duty cycle	100%	100%
Operating mode	continuous	continuous
Scanning speed	2 - 6 000 mm/s	2 - 6 000 mm/s
Scanning width	F400: 0 - 150 mm F600: 0 - 225 mm F800: 0 - 300 mm	F400: 0 - 150 mm F600: 0 - 225 mm F800: 0 - 300 mm
Frequency	5 - 5 000 Hz	5 - 5 000 Hz
Cooling type	liquid	liquid
Weight	140 kg	220 kg
Dimensions	956 x 580 x 823 mm	1140 x 595 x 1080 mm

## THE SET INCLUDES

- ✓ LASER SOURCE **Raycus** ✓ COOLING LIQUID
- ✓ C220 HANDHELD LASER HEAD (9,5 M) WITH F800 FOCUS LENS
- ✓ ADDITIONALLY: F400 FOCUS LENS AND 5 PROTECTIVE LENSES





**SPARTUS®**