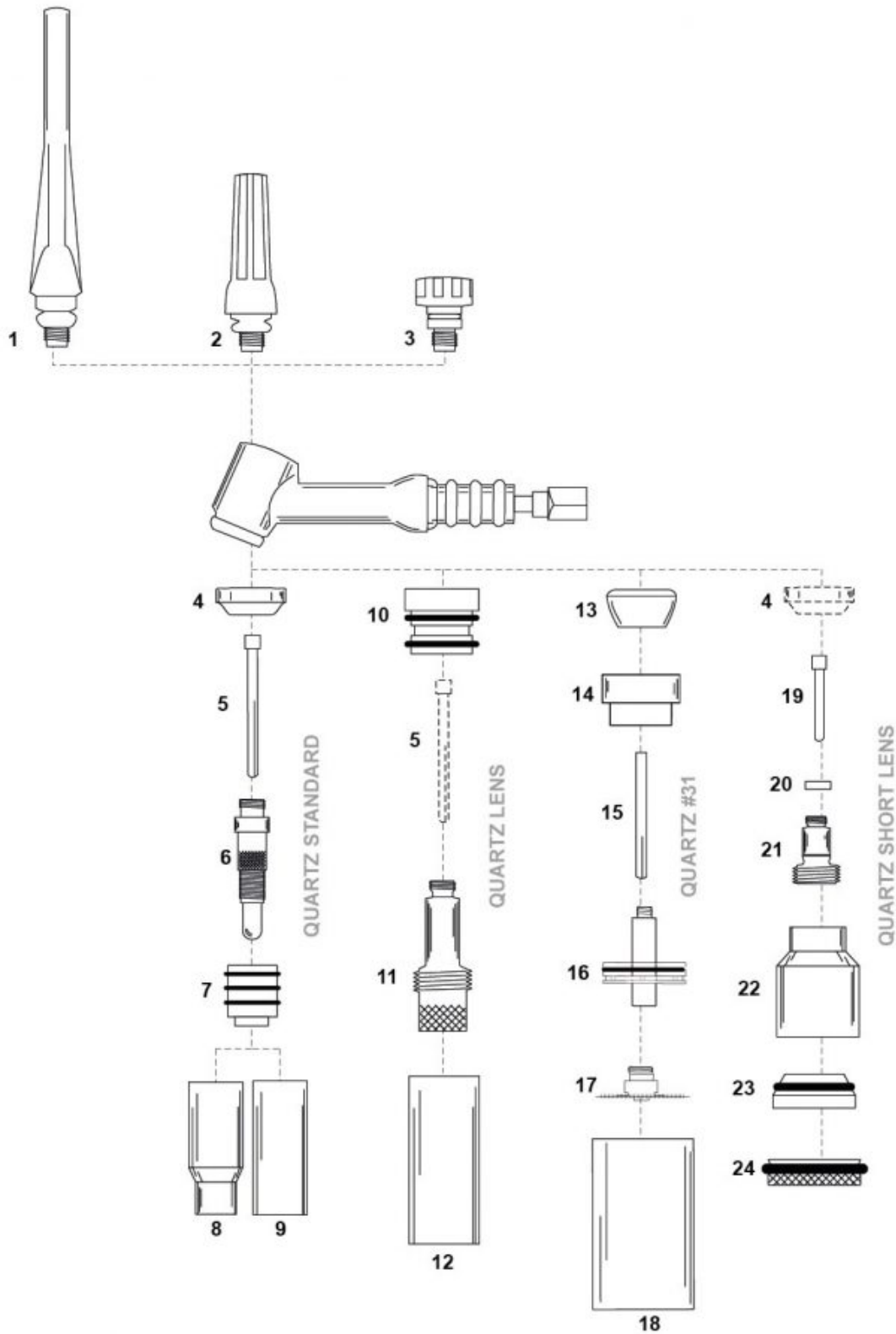


TIG QUARTZ- Consumables - NW®/SPARTUS® - 17 / 18 / 26 / 170F / 26MP / 250F / 1726R / 1726 / 1726P



Lp.	Product code	Product name	Electrode diameter [mm]	Net price
1	NW57Y02	Long back cap 17/18/26/18SC		0.26 €
2	NW300M	Medium back cap 17/18/26/18SC		0.26 €
3	NW57Y04	Short back cap 17/18/26/18SC		0.24 €
4	NW18CGG	Gas short lens insulator 17/18/26 (teflon)		2.93 €

Lp.	Product code	Product name	Electrode diameter [mm]	Net price
5	NW10N22	Collet 17/18/26/18SC standard [d=1.0mm]	1.0	0.17 €
	NW10N23	Collet 17/18/26/18SC standard [d=1.6mm]	1.6	0.17 €
	NW10N2M	Collet 17/18/26/18SC standard [d=2.0mm]	2.0	0.17 €
	NW10N24	Collet 17/18/26/18SC standard [d=2.4mm]	2.4	0.17 €
	NW10N25	Collet 17/18/26 standard [d=3.2mm]	3.2	0.20 €
	NW54N20	Collet 17/18/26 standard [d=4.0mm]	4.0	0.20 €
6	NW10N30	Collet body 17/18/26 [d=1.0mm]	1.0	0.40 €
	NW10N31	Collet body 17/18/26 [d=1.6mm]	1.6	0.40 €
	NW10CB2M	Collet body 17/18/26 [d=2.0mm]	2.0	0.40 €
	NW10N32	Collet body 17/18/26 [d=2.4mm]	2.4	0.40 €
	NW10N28	Collet body 17/18/26 [d=3.2mm]	3.2	0.40 €
	NW406488	Collet body 17/18/26 [d=4.0mm]	4.0	0.40 €
7	10A32	Adapter 17/18/26 standard QUARTZ		4.58 €
8	10D11	Gas nozzle 17/18/26 QUARTZ standard [flaring]		18.37 €
9	10D15	Gas nozzle 17/18/26 standard QUARTZ		9.17 €
10	54D01	Insulator 17/18/26 lens QUARTZ		4.58 €
11	NW45V24	Gas lens collet body 17/18/26 [d=1.0mm]	1.0	2.25 €
	NW45V25	Gas lens collet body 17/18/26 [d=1.6mm]	1.6	2.25 €
	NW45V26	Gas lens collet body 17/18/26 [d=2-2,4mm]	2.0, 2.4	2.25 €
	NW45V27	Gas lens collet body 17/18/26 [d=3.2mm]	3.2	2.25 €
	NW45V28	Gas lens collet body 17/18/26 [d=4.0mm]	4.0	2.25 €
12	54D20	Gas nozzle 17/18/26 lens QUARTZ		9.17 €
13	NW18CG	Gas insulator 17/18/26 (teflon)		0.19 €
14	NW56N01	Gas insulator 17/18/26 QUARTZ (teflon)		9.45 €
15	NW55T16	Collet 17/18/26 for QUARTZ [d=1.6mm]	1.6	1.87 €
	NW55T24	Collet 17/18/26 for QUARTZ [d=2.4mm]	2.4	1.87 €
	NW55T32	Collet 17/18/26 for QUARTZ [d=3.2mm]	3.2	1.87 €
	NW55T40	Collet 17/18/26 for QUARTZ [d=4.0mm]	4.0	1.87 €
16	NW56A32	Adaptor 17/18/26 QUARTZ	1.6, 2.4, 3.2, 4.0	6.87 €
17	NW56S16	Gas lens collet body 17/18/26 QUARTZ [d=1.6mm]	1.6	16.07 €
	NW56S24	Gas lens collet body 17/18/26 QUARTZ [d=2.4mm]	2.4	16.07 €
	NW56S32	Gas lens collet body 17/18/26 QUARTZ [d=3.2mm]	3.2	16.07 €
	NW56S40	Gas lens collet body 17/18/26 QUARTZ [d=4.0mm]	4.0	16.07 €
18	NW56D31	Gas nozzle 17/18/26 QUARTZ		11.47 €
19	NW13N22GL	Collet 17/18/26 for short lens [d=1.6mm]	1.6	1.87 €
	NW13N23GL	Collet 17/18/26 for short lens [d=2.4mm]	2.4	1.87 €
20	45V00L	Distance 17/18/26 QUARTZ short lens		2.28 €
21	NW45V43L	Gas lens collet body 17/18/26 short [d=1.6mm]	1.6	4.16 €
	NW45V44L	Gas lens collet body 17/18/26 short [d=2.4mm]	2.4	4.16 €
22	NW53D27	Gas nozzle [for torch 17/18/26] - L=32mm d=15-27mm QUARTZ short		2.37 €
23	NW53A24	Adaptor 17/18/26 QUARTZ short lens		3.26 €
24	NW53S24	Strainer 17/18/26 QUARTZ short lens		3.26 €

NW ® is independent subject and not connected to ABITIG®, AMPHENOL®, ASPA®, BESTER®, BINZEL®, CEA®, CEBORA®, ESAB®, EWM®, FALTIG®, FRO®, FRONIUS®, HARRIS®, HYPERTHERM®, KJELLBERG®, L-TEC®, LINCOLN®, MAGNUM®, OTC®, SAF®, SHERMAN®, TELWIN®, THERMAL DYNAMICS®, TRAFIMET®, TUCHEL®.

Reference numbers and names belonged to above companies were called due to Property Right Law for buyer's convenience and they are related to code and spare part's description.

The products do not constitute an offer within the meaning of the Civil Code.