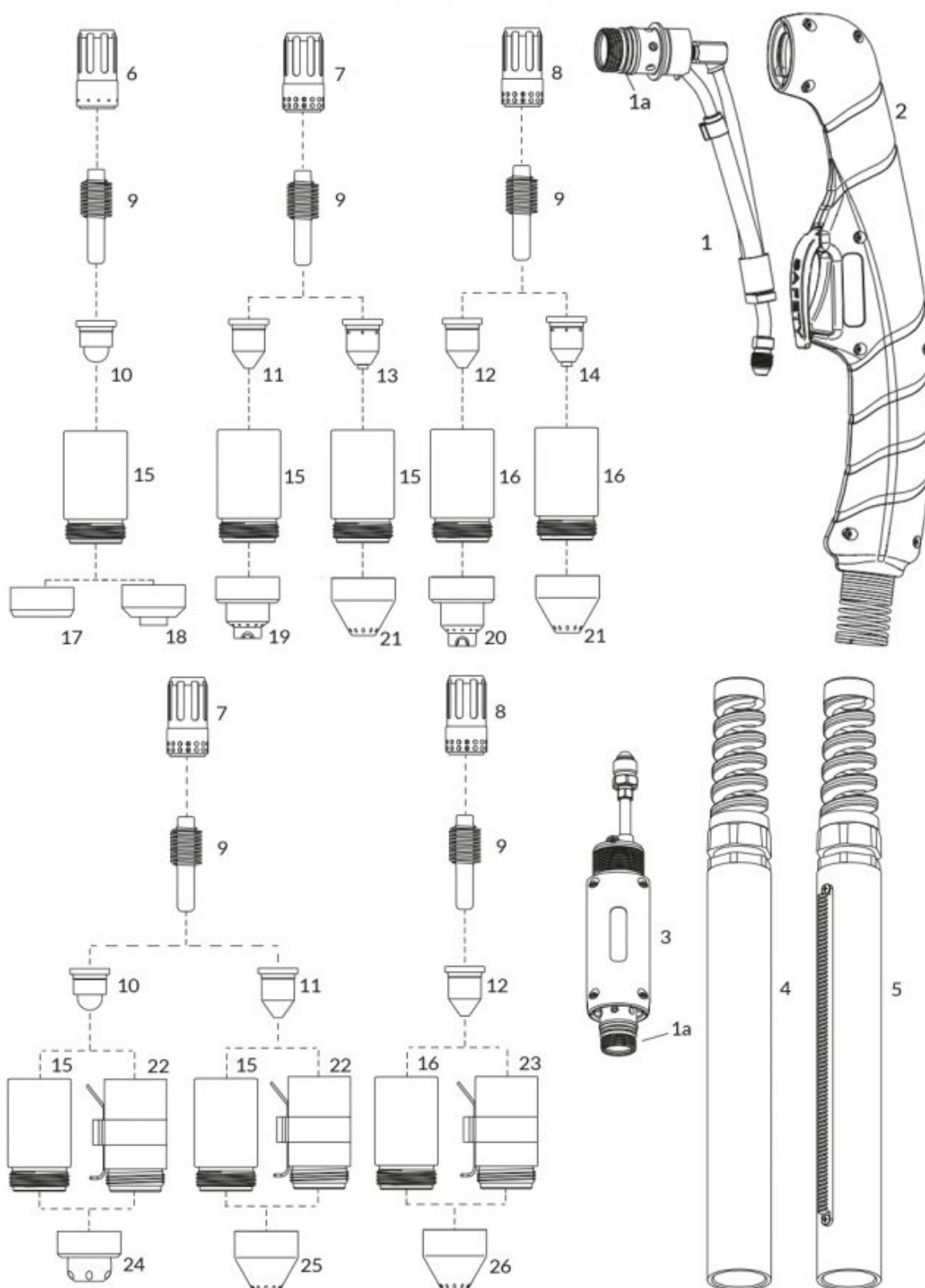


# PLASMA - Consumables - SPARTUS® SP45HY / SP45MY / SP85HY / SP85MY / SP125HY / SP125MY



Lp.	Product code	[H]	[M]	Product name
1	NW05900	■		Hand torch head
1a	NW03700.60	■	■	O-ring
2	NW05905	■		Handle with microswitch

Lp.	Product code	[H]	[M]	Product name
3	NW05910			Machine torch head
4	NW07218			Machine handle
5	NW07219			Fiberglass positioning tube with rack
6	NW60032			Swirl ring 45A, Precision Cut, Max Life
7	NW60042E			Swirl ring 45-85A
	NW60042			Swirl ring 45-85A
8	NW60040E			Swirl ring 100-125A ECO
	NW60040			Swirl ring Max Life 100-125A
9	NW52677			Electrode 45-125A
	NW52677BM			Electrode 45-125A BiMetal
10	NW51415			Tip 45A Precision Cut
11	NW51416			Nozzle 45A
	NW51417			Nozzle 65A
	NW51418			Nozzle 85A
12	NW51419			Nozzle 105A
	NW51419.16			Nozzle 125A
13	NW51417G			Nozzle 65-85A
14	NW51418G			Nozzle 105A
	NW51419G			Nozzle 125A
15	NW60309A			Retaining cap 45-85A ECO
	NW60309AV			Retaining cap 45-85A Max Life
16	NW60309B			Retaining cap 100-125A ECO
	NW60309BV			Retaining cap 100 - 125A Max Life
17	NW51928			Deflector 45A
18	NW51931			Deflector, 45A Precision Cut
19	NW51921			Shield cap 45-85A
20	NW51926			Hand shield 100-125A
21	NW51927G			Machine shield 45-125A, gouging
22	NW60309HA			Retaining cap 45-85A
23	NW60309HB			Retaining cap 100-125A
24	NW51929			Machine shield, Precision Cut
25	NW51922			Shield cap, machine 45-85A
26	NW51927			Machine shield 100-125A

[H] - części stosować w uchwycie ręcznym

[M] - części stosować w uchwycie maszynowym

NW ® is independent subject and not connected to ABITIG®, AMPHENOL®, ASPA®, BESTER®, BINZEL®, CEA®, CEBORA®, ESAB®, EWM®, FALTIG®, FRO®, FRONIUS®, HARRIS®, HYPERTHERM®, KJELLBERG®, L-TEC®, LINCOLN®, MAGNUM®, OTC®, SAF®, SHERMAN®, TELWIN®, THERMAL DYNAMICS®, TRAFIMET®, TUCHEL®.

Reference numbers and names belonged to above companies were called due to Property Right Law for buyer's convenience and they are related to code and spare part's description.

The products do not constitute an offer within the meaning of the Civil Code.