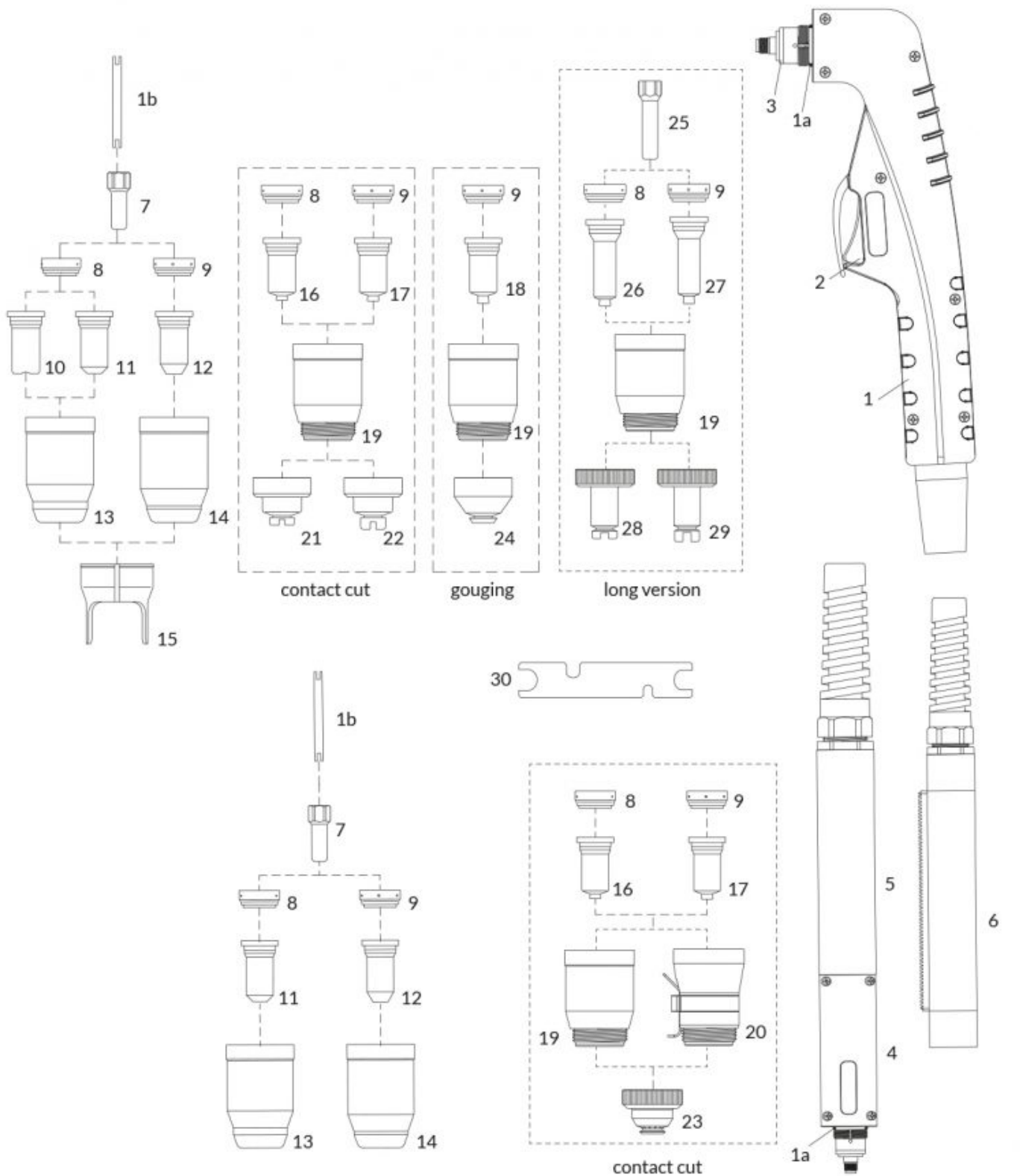


SPARTUS® SP100H / SP100M



Lp.	Product code	[H]	[M]	Product name	Net price
1	NW09700KIT	■		Hand torch head with handgrip	135.84 €
1a	NW51190.41	■	■	O-ring	0.96 €
1b	NW09700.48	■	■	Water cooling tube	8.50 €

Lp.	Product code	[H]	[M]	Product name	Net price
2	NW07301.20	■		Microswitch	2.86 €
3	NW09700	■		Hand torch head	116.26 €
4	NW09710		■	Machine torch head	161.25 €
5	NW07218		■	Machine handle	53.34 €
6	NW07219		■	Fiberglass positioning tube with rack	125.53 €
7	NW52556	■	■	Electrode	3.67 €
8	NW60025	■	■	Swirl ring 30-70A	9.76 €
9	NW60026	■	■	Swirl ring 80-120A	10.36 €
10	NW51245.09	■	■	Contact tip fi 0.9 30-40A	4.69 €
11	NW51246.10	■	■	Contact tip1.0 40-50A	3.39 €
	NW51246.11	■	■	Contact tip fi 1.1 50-60A	3.39 €
	NW51246.12	■	■	Contact tip fi 1.2 60-70A	3.39 €
12	NW51248.14	■	■	Contact tip fi 1.4 80-90A	3.51 €
	NW51248.15	■	■	Contact tip fi 1.5 100-110A	3.51 €
	NW51248.16	:	:	Contact tip fi 1.6 110-120A	3.51 €
13	NW60500	■	■	Shield cap 30-70A	28.47 €
14	NW60501	■	■	Shield cap 80-120A	28.47 €
15	NW60444	■		Double pointed spacer	8.16 €
16	NW51276.10	■	■	Contact tip fi 1.0 40-50A	3.54 €
	NW51276.11	■	■	Contact tip fi 1.1 50-60A	3.54 €
	NW51276.12	■	■	Contact tip fi 1.2 60-70A	3.54 €
17	NW51278.14	■	■	Contact tip fi 1.4 80-90A	3.58 €
	NW51278.15	■	■	Contact tip fi 1.5 100-110A	3.58 €
18	NW51278G.22	■		Gouging contact tip 100-120A	3.87 €
19	NW60502	■	■	Shield cap	28.47 €
20	NW60502H	■	■	Shield cap (OHMIC)	
21	NW60504	■		Shield cap body hand 40-70A	14.23 €
22	NW60505	■		Shield cap body hand 80-120A	14.23 €
23	NW60506		■	Shield cap body machine	14.23 €
24	NW60508	■		Shield cap body (gouging)	10.95 €
25	NW52556L	■		Extended electrode	14.16 €
26	NW51276L.10	■		Extended contact tip fi 1.0 40-50A	6.21 €
27	NW51278L.14	■		Extended contact tip fi 1.4 80-90A	6.33 €
	NW51278L.15	■		Extended contact tip fi 1.5 100-110A	13.51 €
28	NW60504L	■		Shield cap body (long) 40-70A	17.07 €
29	NW60505L	■		Shield cap body (long) 80-120A	17.07 €
30	NW60368	■	■	Wrench for electrode	2.63 €

[H] - parts apply to hand torch,

[M] - parts apply to machine torch

NW ® is independent subject and not connected to ABITIG®, AMPHENOL®, ASPA®, BESTER®, BINZEL®, CEA®, CEBOA®, ESAB®, EWM®, FALTIG®, FRO®, FRONIUS®, HARRIS®, HYPERTHERM®, KJELLBERG®, L-TEC®, LINCOLN®, MAGNUM®, OTC®, SAF®, SHERMAN®, TELWIN®, THERMAL DYNAMICS®, TRAFIMET®, TUCHEL®.

Reference numbers and names belonged to above companies were called due to Property Right Law for buyer's convenience and they are related to code and spare part's description.



The products do not constitute an offer within the meaning of the Civil Code.