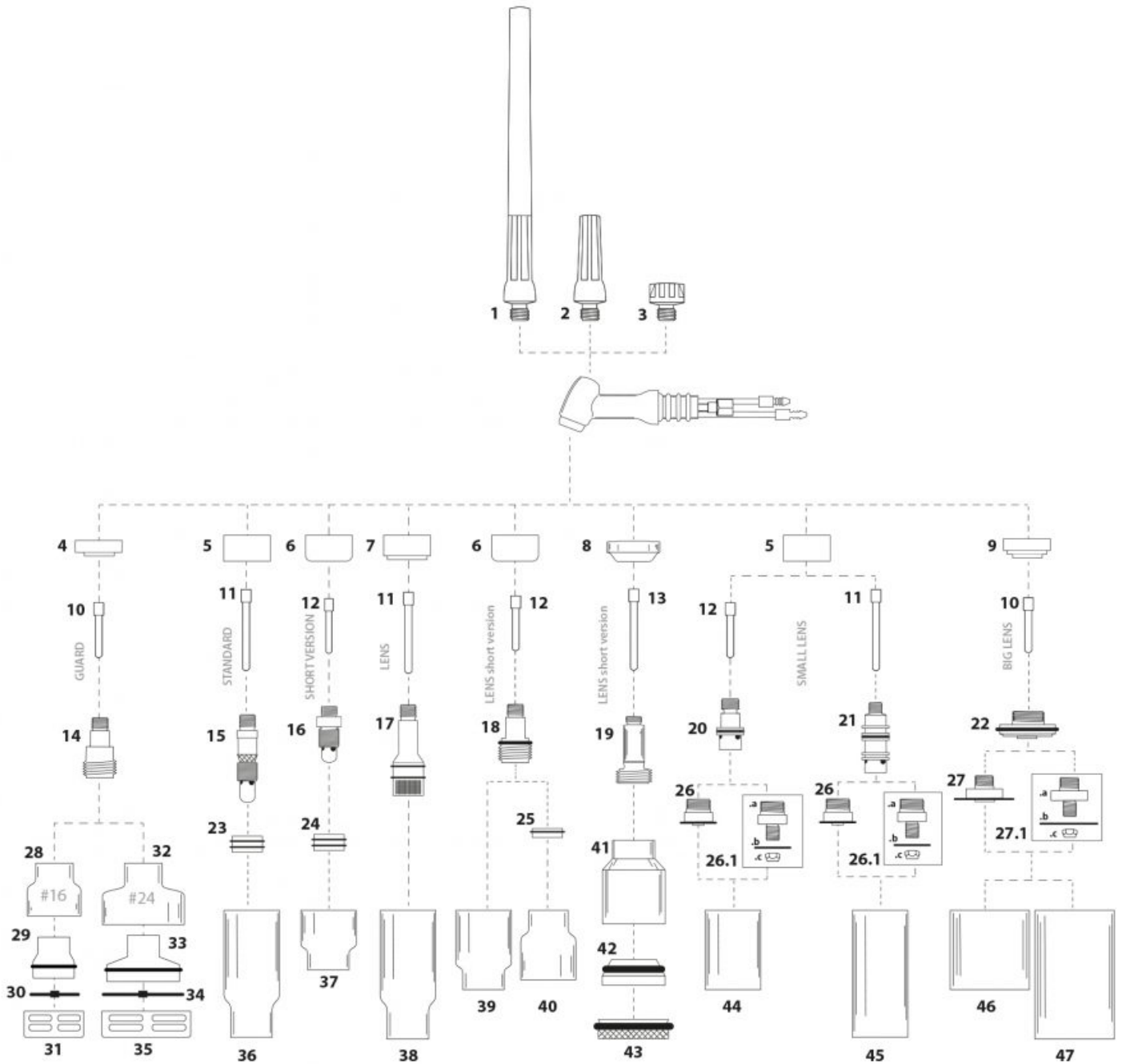


QUARTZSYSTEM - Consumables - NW®/SPARTUS® - 17/18/26



Lp.	Product code	Product name	Electrode diameter [mm]	Net price
1	NW57Y02	Long back cap 17/18/26/18SC		0.26 €
2	NW300M	Medium back cap 17/18/26/18SC		0.26 €
3	NW57Y04	Short back cap 17/18/26/18SC		0.24 €
4	NW17-26N10	Gas insulator QUARTZSystem 17/18/26 short ver. lens		2.93 €
5	NW17-10N47	Gas insulator QUARTZSYSTEM 17/18/26 standard		0.86 €
6	NW17-25N10	Gas insulator QUARTZSYSTEM 17/18/26 lens short ver. and gas nozzle flaring		0.39 €
7	NW17-47N10	Gas insulator QUARTZSYSTEM 17/18/26 lens		0.86 €
8	NW18CGG	Gas short lens insulator 17/18/26 (teflon)		2.93 €

Lp.	Product code	Product name	Electrode diameter [mm]	Net price
9	NW17-33N29	Gas insulator QUARTZSYSTEM 17/18/26 big lens		1.49 €
10	NW17-25T16	Collet QUARTZSYSTEM 17/18/26 L=31,5mm d=1,6mm	1.6	0.44 €
	NW17-25T24	Collet QUARTZSYSTEM 17/18/26 L=31,5mm d=2,4mm	2.4	0.44 €
11	NW17-47T16	Collet QUARTZSYSTEM 17/18/26 L=51mm d=1,6mm	1.6	0.55 €
	NW17-47T24	Collet QUARTZSYSTEM 17/18/26 L=51mm d=2,4mm	2.4	0.55 €
12	NW10N23S	Collet 17/18/26 short [d=1.6mm]	1.6	1.17 €
	NW10N24S	Collet 17/18/26 short [d=2.4mm]	2.4	1.17 €
13	NW13N22GXL	Collet [for torch 17/18/26] - L=35mm d=1.6mm	1.6	1.20 €
	NW13N23GXL	Collet [for torch 17/18/26] - L=35mm d=2.4mm	2.4	1.20 €
14	NW17-35S16	Gas lens QUARTZSystem 17/18/26 L=29mm d=1.6mm		4.16 €
	NW17-35S24	Gas lens QUARTZSystem 17/18/26 L=29mm d=2.4mm		4.16 €
15	NW10N31	Collet body 17/18/26 [d=1.6mm]	1.6	0.46 €
	NW10N32	Collet body 17/18/26 [d=2.4mm]	2.4	0.46 €
16	NW17-25A16	Collet body QUARTZSYSTEM 17/18/26 standard short ver. d=1.6mm	1.6	0.77 €
	NW17-25A24	Collet body QUARTZSYSTEM 17/18/26 standard short ver. d=2.4mm		0.77 €
17	NW17-47S16	Gas lens collet QUARTZSYSTEM 17/18/26 L=48mm d=1.6mm	1.6	3.32 €
	NW17-47S24	Gas lens collet QUARTZSYSTEM 17/18/26 - L=48mm d=2.4mm	2.4	3.32 €
18	NW17-33S16	Gas lens collet QUARTZSYSTEM 17/18/26 - L=29mm d=1.6mm	1.6	2.64 €
	NW17-33S24	Gas lens collet QUARTZSYSTEM 17/18/26 L=29mm d=2.4mm	2.4	2.64 €
19	NW45V43XL	Gas lens collet QUARTZSYSTEM 17/18/26 - L=32mm d=1.6mm	1.6	4.98 €
	NW45V44XL	Gas lens collet QUARTZSYSTEM 17/18/26 - L=32mm d=2.4mm	2.4	4.98 €
20	NW17-32A20	Short adaptor QUARTZSYSTEM 17/18/26 small lens		1.51 €
21	NW17-47A20	Long adaptor QUARTZSYSTEM 17/18/26 small lens		1.51 €
22	NW17-33A29	Adaptor QUARTZSYSTEM 17/18/26 big lens		5.18 €
23	NW17-10A47	Adaptor QUARTZSYSTEM 17/18/26 standard		0.67 €
24	NW17-25A10	Adaptor QUARTZSYSTEM 17/18/26 standard short ver.		0.79 €
25	NW9-17-28A16	Adaptor QUARTZSystem 9/20 17/18/26 D=19.4mm L=7mm d=1,6mm		3.93 €
	NW9-17-28A24	Adaptor QUARTZSystem 9/20 17/18/26 D=19.4mm L=7mm d=2,4mm		3.93 €
26	NW9-17-25S16	Small gas lens collet QUARTZSystem 9/20 17/18/26 L=12.5mm d=1.6mm	1.6	2.08 €
	NW9-17-25S24	Small gas lens collet QUARTZSystem 9/20 17/18/26 L=12.5mm d=2.4mm	2.4	2.08 €
26.1	NW9-17-26S16	Small gas lens collet set with replaceable strainer QUARTZSystem 9/20 17/18/26 L=16mm d=1.6mm	1.6	2.40 €
	NW9-17-26S24	Small gas lens collet set with replaceable strainer QUARTZSystem 9/20 17/18/26 L=16mm d=2.4mm	2.4	2.40 €
26.1a	NW9-17-26A16	Small gas lens collet body QUARTZSystem 9/20 17/18/26 L=16mm d=1.6mm	1.6	1.27 €
	NW9-17-26A24	Small gas lens collet body QUARTZSystem 9/20 17/18/26 L=16mm d=2.4mm	2.4	1.27 €
26.1b	NW9-17-26P20	Strainer QUARTZSystem 9/20 17/18/26 small lens		0.77 €
26.1c	NW9-17-26J20	Nut QUARTZSystem 9/20 17/18/26 small lens		0.39 €
27	NW9-17-33S16	Big gas lens collet QUARTZSystem 9/20 17/18/26 L=12mm d=1.6mm	1.6	3.93 €
	NW9-17-33S24	Big gas lens collet QUARTZSystem 9/20 17/18/26 L=12mm d=2.4mm	2.4	3.93 €
27.1	NW9-17-34S16	Big gas lens collet set with replaceable strainer QUARTZSystem 9/20 17/18/26 L=18mm d=1.6mm	1.6	4.39 €
	NW9-17-34S24	Big gas lens collet set with replaceable strainer QUARTZSystem 9/20 17/18/26 L=18mm d=2.4mm	2.4	4.39 €
27.1a	NW9-17-34A16	Big gas lens collet body QUARTZSystem 9/20 17/18/26 L=16mm d=1.6mm	1.6	1.27 €

Lp.	Product code	Product name	Electrode diameter [mm]	Net price
	NW9-17-34A24	Big gas lens collet body QUARTZSystem 9/20 17/18/26 L=16mm d=2.4mm	2.4	1.27 €
27.1b	NW9-17-34P29	Strainer QUARTZSystem 9/20 17/18/26 big lens		1.30 €
27.1c	NW9-17-34J29	Nut QUARTZSystem 9/20 17/18/26 big lens		0.39 €
28	NW9-17-32D32	Gas nozzle QUARTZSystem GUARD #16 - L=28mm d=32mm		10.27 €
29	NW9-17-32A32	Brass adaptor QUARTZSystem GUARD #16 L=24mm d=21mm		3.40 €
	NW9-17-32R32	O-ring QUARTZSystem GUARD #16		1.00 €
30	NW9-17-32S16	Strainer QUARTZSystem GUARD lens 9/20, short ver. 17/18/26 d=1.6mm		3.40 €
	NW9-17-32S24	Strainer QUARTZSystem GUARD lens 9/20, short ver. 17/18/26 d=2.4mm		3.40 €
31	NW9-17-32P32	Protective ring QUARTZSystem GUARD #16		3.40 €
32	NW9-17-38D44	Gas nozzle QUARTZSystem GUARD #24 L=40mm d=38mm		13.70 €
33	NW9-17-38A44	Brass adaptor QUARTZSystem GUARD #24 L=36mm d=28mm		5.12 €
	NW9-17-38R44	O-ring QUARTZSystem GUARD #24		1.29 €
34	NW9-17-38S16	Strainer QUARTZSystem GUARD lens 9/20, short ver. 17/18/26 d=1.6mm		5.12 €
	NW9-17-38S24	Strainer QUARTZSystem GUARD lens 9/20, short ver. 17/18/26 d=2.4mm		5.12 €
35	NW9-17-38P44	Protective ring QUARTZSystem GUARD #24		3.40 €
36	NW17-10D47	Gas nozzle L=47mm d=14/10mm QUARTZSYSTEM 17/18/26 standard		4.56 €
37	NW9-17-25D10	Gas nozzle L=25mm d=14/10mm QUARTZSystem standard, 17/18/26 standard short ver.		3.79 €
38	NW17-47D10	Gas nozzle d=17/10mm L=47mm QUARTZSYSTEM 17/18/26 standard, lens		4.75 €
39	NW9-17-33D10	Gas nozzle d=10mm L=33mm QUARTZSystem 9/20 lens; 17/18/26 lens shot ver.		3.93 €
40	NW9-17-28D21	Gas nozzle flaring d=21mm L=28mm QUARTZSystem 9/20 17/18/26 lens		3.93 €
41	NW53D27	Gas nozzle [for torch 17/18/26] - L=32mm d=15-27mm QUARTZ short		2.37 €
42	NW53A24	Adaptor 17/18/26 QUARTZ short lens		3.26 €
43	NW53S24	Strainer 17/18/26 QUARTZ short lens		3.26 €
44	NW9-17-32D20	Gas nozzle d=14mm L=32.5mm QUARTZSystem 9/20 17/18/26 small lens		2.83 €
45	NW17-47D20	Gas nozzle d=14mm L=47mm QUARTZSYSTEM 17/18/26 small lens		2.81 €
46	NW9-17-33D29	Gas nozzle d=29mm L=33mm QUARTZSystem 9/20 17/18/26 big lens		7.82 €
47	NW9-17-47D29	Gas nozzle d=29mm L=47mm QUARTZSystem 9/20 17/18/26 big lens		7.82 €

NW ® is independent subject and not connected to ABITIG®, AMPHENOL®, ASPA®, BESTER®, BINZEL®, CEA®, CEORA®, ESAB®, EWM®, FALTIG®, FRO®, FRONIUS®, HARRIS®, HYPER THERM®, KJELLBERG®, L-TEC®, LINCOLN®, MAGNUM®, OTC®, SAF®, SHERMAN®, TELWIN®, THERMAL DYNAMICS®, TRAFIMET®, TUCHEL®.

Reference numbers and names belonged to above companies were called due to Property Right Law for buyer's convenience and they are related to code and spare part's description.

The products do not constitute an offer within the meaning of the Civil Code.