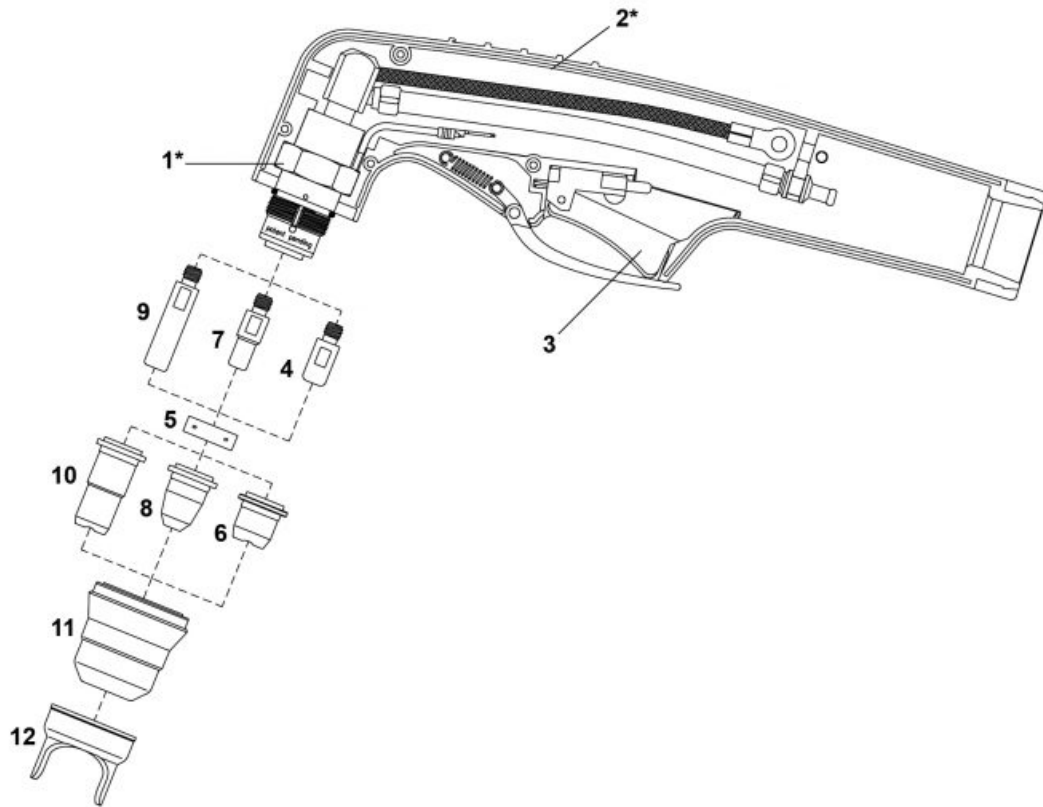


## PLAZMA - Consumables - TRAFIMET® - S25-S25K / S30-S35K / S45®



Lp.	Product code	Nr ref.	Product name	Net price
1*	09600		Hand torch head	102.09 €
	NW09602KIT		70° Torch head [PT-40/20C] with handle	114.03 €
2*	NW09605		Handle with microswitch	18.65 €
3	NW07301.20		Microswitch	2.86 €
4	52536		Electrode	1.79 €
5	NW60028		Swirl ring	7.28 €
6	51315.09		Tip fi0.9	1.87 €
	51315		Tip fi1.0	1.87 €
7	NW52531		Electrode	1.89 €
8	NW51316.06		Tip fi0.65	1.90 €
	NW51316		Tip fi0.8	1.82 €
	NW51316.09		Tip fi0.9	1.82 €
9	52532		Extended electrode	2.16 €
10	51317.06		Extended tip fi0.65	2.96 €
	T51317-09		Extended tip fi0.9	2.61 €
	NW51317		Extended tip fi1.0	2.96 €
11	NW60389		Retaining cap	7.62 €
	NW60389K1		Shield cap (single)	7.31 €
	NW60389K		Shield cap (double)	7.38 €
	NW60389K4		Retaining cap (4 holes)	8.23 €
12	NW60431		Double pointed spacer	6.71 €
*	09680		Lead assembly 4m [H] A	69.36 €

Lp.	Product code	Nr ref.	Product name	Net price
*	09682		Lead assembly 4m [H] B	73.01 €
*	09687CX		Lead assembly 4m [H] B (coaxial cable)	121.81 €
*	09688		Cable 6m, PT40, 1/4G	108.27 €
*	09689		Cable 6m, PT40, 1/4G, central connector	105.05 €

NW ® is independent subject and not connected to ABITIG®, AMPHENOL®, ASPA®, BESTER®, BINZEL®, CEA®, CEBORA®, ESAB®, EWM®, FALTIG®, FRO®, FRONIUS®, HARRIS®, HYPER THERM®, KJELLBERG®, L-TEC®, LINCOLN®, MAGNUM®, OTC®, SAF®, SHERMAN®, TELWIN®, THERMAL DYNAMICS®, TRAFIMET®, TUCHEL®.

Reference numbers and names belonged to above companies were called due to Property Right Law for buyer's convenience and they are related to code and spare part's description.

The products do not constitute an offer within the meaning of the Civil Code.