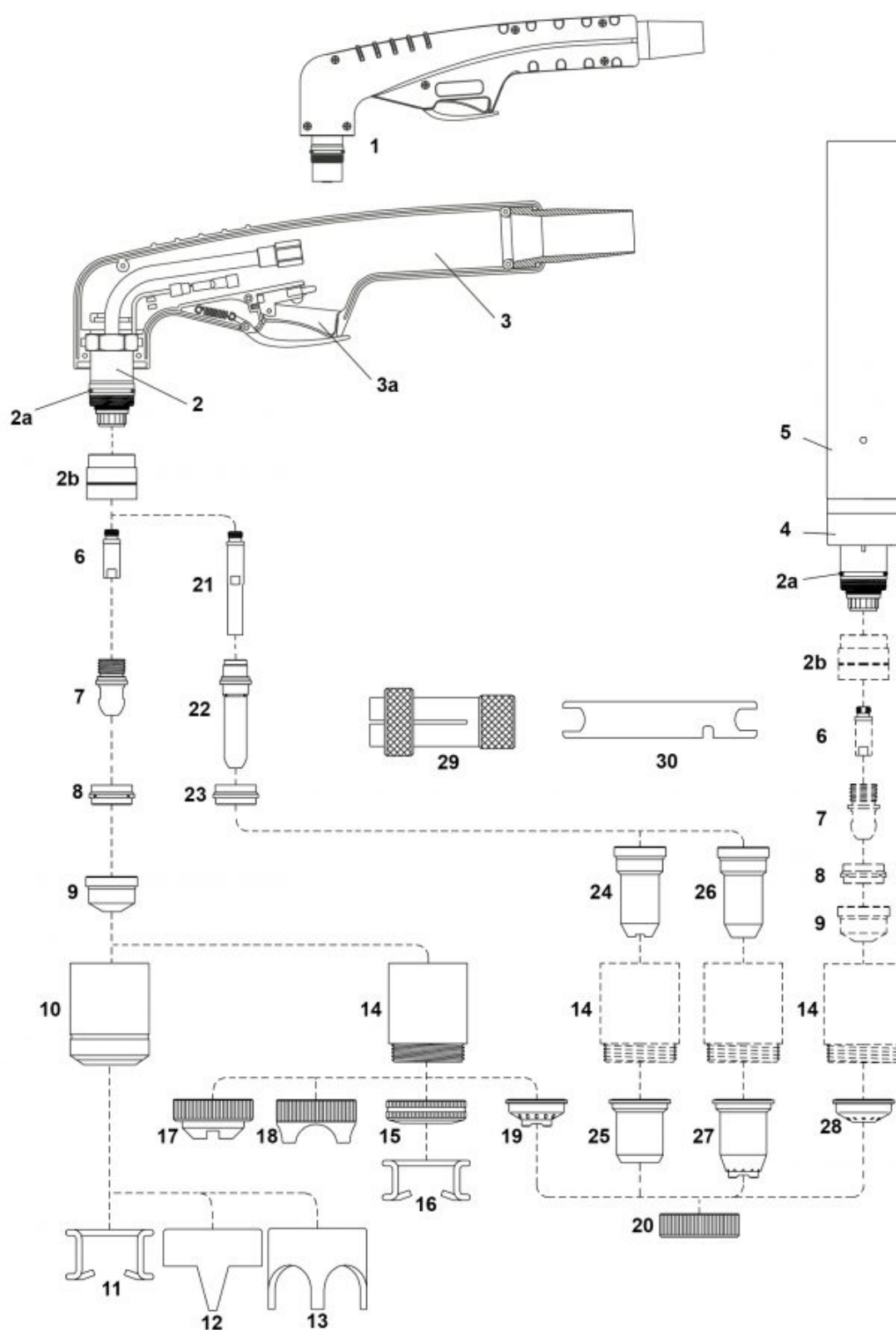


# PLAZMA – Consumables – SPARTUS® – SP101H / SP101M



Lp.	Product code	Nr ref.	[H]	[M]	Product name	Net price
1	NW06001KIT		:	:	Hand torch head with handgrip	136.37 €
2	06001		:	:	Hand torch head	118.38 €
2a	NW06000.60		■	■	O-ring	0.96 €
2b	NW60085		■	■	Front insulator	29.45 €

Lp.	Product code	Nr ref.	[H]	[M]	Product name	Net price
3	09706		:	:	Handgrip with microswitch	19.57 €
3a	NW07301.20		■		Microswitch	2.86 €
4	NW06600			■	Machine torch head	214.62 €
5	NW03310			■	Machine handle	50.49 €
6	NW06004		■	■	Diffusor	2.77 €
7	NW52535		■	■	Electrode	2.03 €
8	NW60030		■	■	Swirl ring	7.79 €
9	NW51154		■	■	Tip fi 1.1	2.22 €
	NW51155		■	■	Tip fi 1.4	2.22 €
	NW51156		■	■	Tip fi 1.7	2.22 €
10	NW60376		■		Retaining cap Long Life	20.73 €
11	NW51910		■		Spacer spring	1.29 €
12	NW60370		■		Double pointed spacer	12.75 €
13	NW60371		■		Crown spacer	15.27 €
14	NW60386		■	■	Retaining cap	31.64 €
	NW60386V		■	■	Contact retaining cap Max Life	47.46 €
15	NW51952		■		Spring holder protection nut	6.13 €
16	NW51911		■		Spacer spring	1.38 €
17	NW51940		■		Spacer for contact cutting	10.88 €
18	51945		■		Large spacer for contact cutting	10.95 €
19	NW51950		■		Spacer for contact cutting hand	8.79 €
20	NW51959		■	■	Locking nut	4.36 €
21	NW06005		■		Extended diffusor	8.63 €
22	NW52530		■		Extended electrode	6.24 €
23	NW60031		■		Swirl ring	7.39 €
24	NW51149		■		Extended tip fi 1.1 max 50A	6.31 €
25	NW51957		■		Shield cap, hand max 50A	9.53 €
26	NW51149.14		■		Extended tip fi 1.4	6.31 €
	NW51149.17		:	:	Extended tip fi 1.7	6.31 €
27	NW51958		■		Spacer for contact cutting hand	11.89 €
28	NW51951			■	Shield cap, machine	8.16 €
29	NW60369		■	■	Extractor for swirl ring	12.48 €
30	NW60368		■	■	Wrench for electrode	2.63 €
	NW04224		■		Cable, 6m (M14x1); hand torch	123.53 €
	NW04234		■		Cable, 12m (M14x1) - hand torch	200.36 €
	NW04222			■	Cable 6m, (M14x1) - machine torch	130.63 €
	NW04232			■	Cable, 12m, M14x1 - machine torch	217.77 €

[H] - parts apply to hand torch,

[M] - parts apply to machine torch

NW ® is independent subject and not connected to ABITIG®, AMPHENOL®, ASPA®, BESTER®, BINZEL®, CEA®, CEBORA®, ESAB®, EWM®, FALTIG®, FRO®, FRONIUS®, HARRIS®, HYPERTHERM®, KJELLBERG®, L-TEC®, LINCOLN®, MAGNUM®, OTC®, SAF®, SHERMAN®, TELWIN®, THERMAL DYNAMICS®, TRAFIMET®, TUCHEL®.

Reference numbers and names belonged to above companies were called due to Property Right Law for buyer's convenience and they are related to code and spare part's description.

*The products do not constitute an offer within the meaning of the Civil Code.*