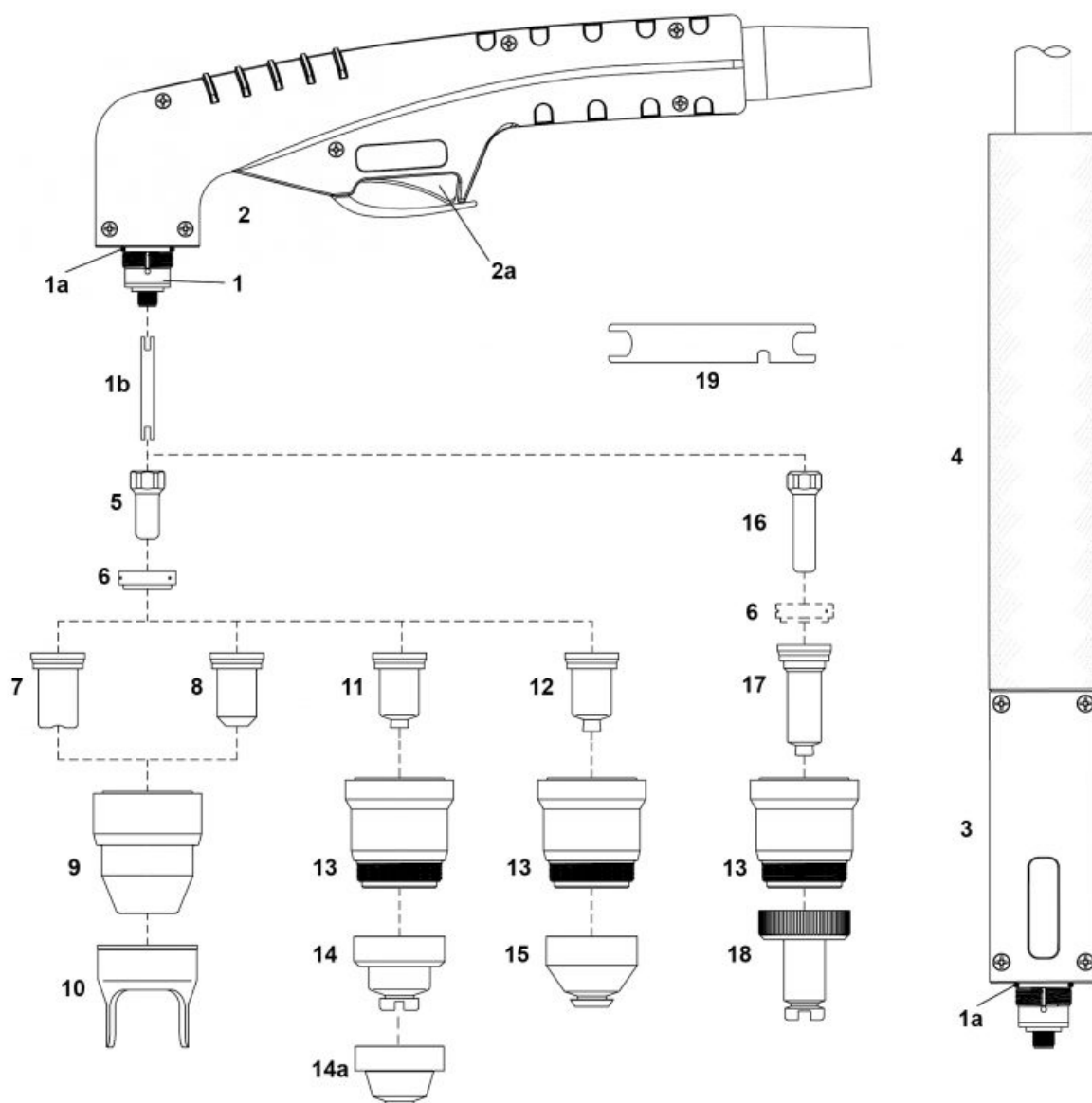


PLAZMA – Consumables – PT™ – PT80H™ / PT80M™



Lp.	Product code	Net price	[H] [M]	Product name
1	NW09800KIT		■	70° Torch head [PT-80] with handle
1a	NW51620.60		■ ■	O-ring
1b	NW09800.42		■ ■	Water cooling tube
2	NW09705		■	Handle with microswitch
2a	NW07301.20		■	Microswitch
3	NW09810		■	Machine torch head
4	NW07218		■	Machine handle
4a	NW07219		■	Fiberglass positioning tube with rack
5	NW52558		■ ■	Electrode
6	NW60027		■ ■	Swirl ring 80-120A
7	NW51310.09		■	Contact tip fi 0.9 30-40A
8	NW51311.10		■ ■	Contact tip fi 1.0 40-50A
	NW51311.11		■ ■	Contact tip fi 1.1 50-60A

Lp.	Product code	Net price	[H]	[M]	Product name
	NW51311.12		■	■	Contact tip fi 1.2 60-70A
	NW51311.13		■	■	Contact tip fi 1.3 70-80A
9	NW60510		■	■	Shield cap
10	NW60434		■		Double pointed spacer
11	NW51311S.10		■	■	Contact tip fi 1.0 40-50A
	NW51311S.11		■	■	Contact tip fi 1.1 50-60A
	NW51311S.12		■	■	Contact tip fi 1.2 60-70A
	NW51311S.13		■	■	Contact tip fi 1.3 70-80A
12	NW51311G.16		■		Gouging contact tip 80A
13	NW60511		■	■	Shield cap
14	NW60504		■		Shield cap body hand 40-70A
14a	NW60506			■	Shield cap body machine
15	NW60508		■		Shield cap body (gouging)
16	NW52558L		■		Extended electrode
17	51311L.10		:	:	Extended contact tip fi 1.0 40-50A
	51311L.11		:	:	Extended contact tip fi 1.1 50-60A
	51311L.12		:	:	Extended contact tip fi 1.2 60-70A
	51311L.13		:	:	Extended contact tip fi 1.3 70-80A
18	NW60504L		■		Shield cap body (long) 40-70A
19	NW60368		■	■	Wrench for electrode
	NW09781		:	:	Lead assembly 6m [H] (1/4")
	09781CX		■		Cable, 6m (1/4") -hand torch
	09786		:	:	Lead assembly 12m [H] (1/4")
	09786CX		■		Cable, 12m (1/4") -hand torch
	09780		:	:	Lead assembly 6m [H] (1/8")
	09780CX		:	:	Lead assembly 6m [H] (1/8") (coaxial cable)
	09785		:	:	Lead assembly 12m [H] (1/8")
	09785CX		:	:	Lead assembly 12m [H] (1/8") (coaxial cable)
	NW09790		:	:	Lead assembly 6m [M] (1/4")
	09790CX		:	:	Lead assembly 6m [M] (1/4") (coaxial cable)
	09795		:	:	Lead assembly 12m [M] (1/4")
	09795CX		:	:	Lead assembly 12m [M] (1/4") (coaxial cable)
	09791		:	:	Lead assembly 6m [M] (1/8")
	09791CX		■		Lead assembly 6m [M] (1/4") (coaxial cable)
	09796		:	:	Lead assembly 12m [M] (1/8")
	09796CX		■		Lead assembly 12m [M] (1/4") (coaxial cable)

[H] - parts apply to hand torch,
[M] - parts apply to machine torch

NW ® is independent subject and not connected to ABITIG®, AMPHENOL®, ASPA®, BESTER®, BINZEL®, CEA®, CEBORA®, ESAB®, EWM®, FALTIG®, FRO®, FRONIUS®, HARRIS®, HYPERTHERM®, KJELLBERG®, L-TEC®, LINCOLN®, MAGNUM®, OTC®, SAF®, SHERMAN®, TELWIN®, THERMAL DYNAMICS®, TRAFIMET®, TUCHEL®.

Reference numbers and names belonged to above companies were called due to Property Right Law for buyer's convenience and they are related to code and spare part's description.

The products do not constitute an offer within the meaning of the Civil Code.