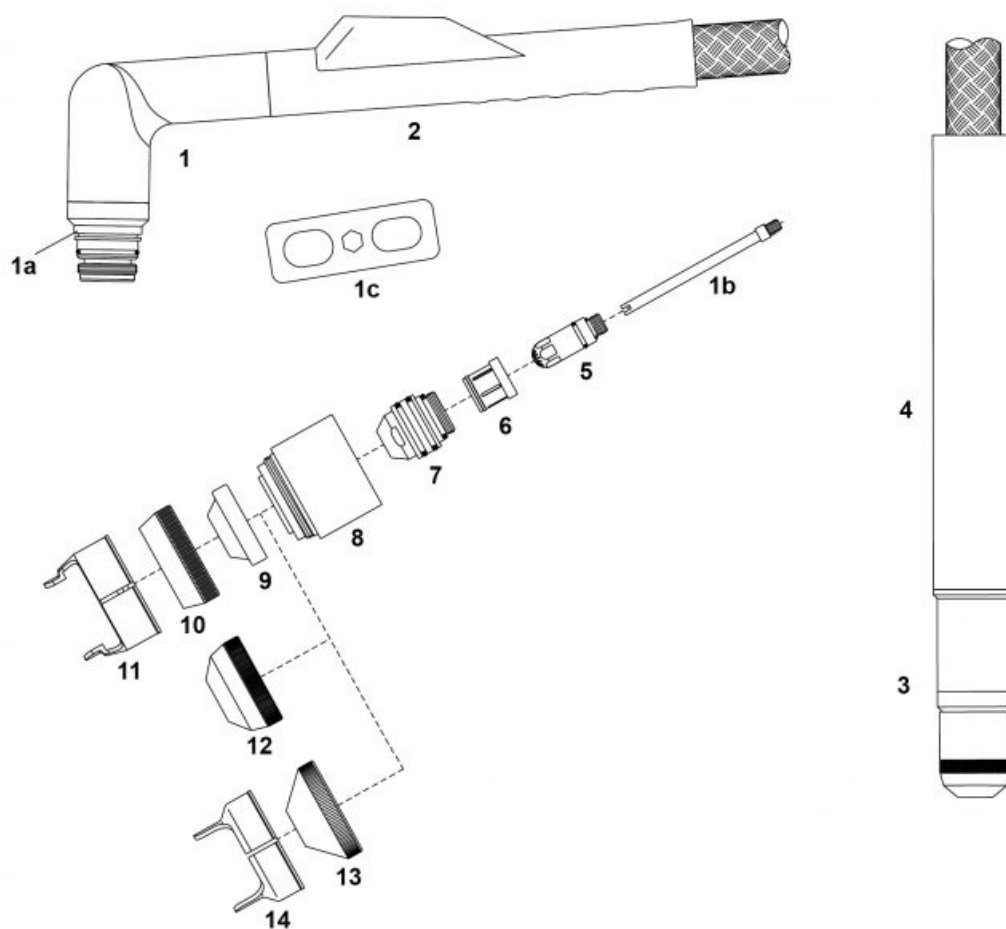


# PLAZMA – Consumables – PT™ – H250W™ / M250W™



Lp.	Product code	[H]	[M]	Product name	Net price
1	08200	:	:	Hand torch head	
1a	60341.41	■	■	O-ring	
1b	08200.43	:	:	Water cooling tube	
1c	08200.54	:	:	Wrench for electrode	
2	07109E	:	:	Handle with microswitch	
3	08210	:	:	Machine torch head	
4	08215	:	:	Machine handle	
5	52614L	:	:	Electrode 50-150A (Air/N2)	
	52614	■	■	Electrode	
6	60052	■	■	Swirl ring 50-250A	
7	51350	■	■	Contact tip 50A	
	51351	■	■	Contact tip 100A	
	51352	■	■	Contact tip 150A	
	51353	■	■	Contact tip 200A	
	51354	■	■	Contact tip 250A	
8	60396S	■	■	Shield cap	
	60398	:	:	Shield cap Max Life	
9	80023	■	■	Ring (non-conductive)	
10	51994	■	■	Shield cap body	

Lp.	Product code	[H]	[M]	Product name	Net price
11	51996	:	:	Double pointed spacer	
12	51997		■	Shield cap body machine	
13	51990	■	■	Shield cap body 50A	
	51991	■	■	Shield cap body 100-250A	
	51992	■	■	Shield cap body 300A	
14	51995	:	:	Double pointed spacer	
	08280	:	:	Lead assembly 7.5m [H] (connection 5/8")	
	08285	:	:	Lead assembly 15m [H] (connection 5/8")	
	08281	:	:	Lead assembly 7.5m [H] (central connector)	
	08286	:	:	Lead assembly 15m [H] (central connector)	
	08290	:	:	Lead assembly 7.5m [M] (connection 5/8")	
	08295	:	:	Lead assembly 15m [M] (connection 5/8")	
	08291	:	:	Lead assembly 7.5m [M] (central connector)	
	08296	:	:	Lead assembly 15m [M] (central connector)	

[H] - parts apply to hand torch,  
[M] - parts apply to machine torch

NW ® is independent subject and not connected to ABITIG®, AMPHENOL®, ASPA®, BESTER®, BINZEL®, CEA®, CEBORA®, ESAB®, EWM®, FALTIG®, FRO®, FRONIUS®, HARRIS®, HYPERTHERM®, KJELLBERG®, L-TEC®, LINCOLN®, MAGNUM®, OTC®, SAF®, SHERMAN®, TELWIN®, THERMAL DYNAMICS®, TRAFIMET®, TUCHEL®.

Reference numbers and names belonged to above companies were called due to Property Right Law for buyer's convenience and they are related to code and spare part's description.

The products do not constitute an offer within the meaning of the Civil Code.