

FERROS 3D 1400 x 1400 x 200 octagonal with rotary table SPARTUS® 1000



**Product code:**

SP28C-14-14-RT1000

\* the price does not include shipping costs

\*\* completion date to be agreed with the sales manager

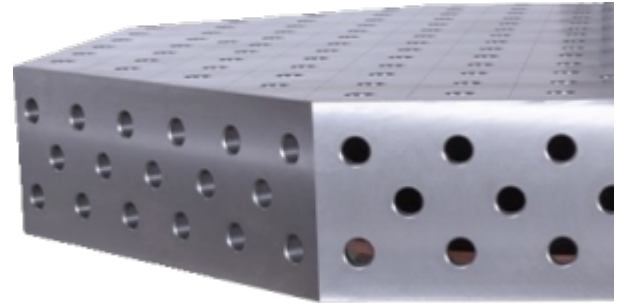
Product description

INCREASE WORK EFFICIENCY THANKS TO MODERN SOLUTIONS!

# FERROS

x 200mm (octagonal)

1400 x 1400



CAST IRON EN-GJL-300

For the casting of the countertop, high-strength cast iron EN-GJL-300 was used, which is characterized by high wear resistance.

TABLE TOP 25MM

The table top with a thickness of 25 mm guarantees the durability of the table and resistance to mechanical damage.

MILLIMETRIC SCALE

The applied millimeter scale facilitates precise installation of the element during processing.

3D SIDE

It allows to expand the working surface and joining the table tops.

D28 SYSTEM

Drilled and chamfered holes 28mm.

SPARTUS® ROTARY TABLES with a countertop size of 1400 x 1400 x 200.

The SPARTUS® rotary tables have been specially designed to work in a vertical position. Adjustable start at smooth rotation with smooth braking is due to the use of the highest class inverter-controlled motors. The compact and compact design of the device provides good access to the workpiece, allowing for precise and comfortable work.

Control interface: manual control panel + foot switch (on separate wires)



Advantages:

- inverter-based motor control
- control pendant for work control
- foot switch
- safety button

ACCESSORY SETS



<p>Accessories SET 1 includes:</p> <p>SP010-30-005 Angle Bracket 175x50x75mm hole/slot 8 pcs</p> <p>SP010-50-002 Universal stopper 225x50x25mm 4 pcs</p> <p>SP010-70-001 180° mounting clamp with 300x300mm holder 6 pcs</p> <p>SP010-60-001 Rapid locking bolt fi 28x50mm 22 pcs</p> <p>SP010-90-003A Hexagon allen wrench 150mm 1 pc.</p> <p>SP010-90-004 Nylon bruschi fi 30x80mm 1 pc.</p> <p>SP010-90-001 Oilstone 200x50x25mm 1 pc.</p> <p>SP010-90-002 1l dispenser bottle 1 pc.</p>	<p>Accessories SET 2 includes:</p> <p>SP010-30-002 Angle bracket 175x50x175mm hole/slot 6 pcs</p> <p>SP010-30-005 Angle bracket 175x50x75mm hole/slot 2 pcs</p> <p>SP010-50-002 Universal stopper 225x50x25mm 4 pcs</p> <p>SP010-70-001 180° mounting clamp with 300x300mm holder 8 pcs</p> <p>SP010-60-001 Rapid locking bolt fi 28x50mm 20 pcs</p> <p>SP010-90-003A Hexagon allen wrench 150mm 1 pc.</p> <p>SP010-90-004 Nylon bruschi fi 30x80mm 1 pc.</p> <p>SP010-90-001 Oilstone 200x50x25mm 1 pc.</p> <p>SP010-90-002 1l dispenser bottle 1 pc.</p>	<p>Accessories SET 3 includes:</p> <p>SP010-23-300L Angle bracket 275x100x300mm left 1 pc.</p> <p>SP010-23-300R Angle bracket 275x100x300mm right 1 pc.</p> <p>SP010-23-600L Angle bracket 375x100x600mm left 1 pc.</p> <p>SP010-23-600R Angle bracket 375x100x600mm right 1 pc.</p> <p>SP010-30-002 Angle bracket 175x50x175mm hole/slot 4 pcs</p> <p>SP010-30-005 Angle bracket 175x50x75mm hole/slot 4 pcs</p> <p>SP010-50-002 Universal stopper 225x50x25mm 6 pcs</p> <p>SP010-70-001 180° mounting clamp with 300x300mm holder 10 pcs</p> <p>SP010-60-001 Rapid locking bolt fi 28x50mm 22 pcs</p> <p>SP010-90-003A Hexagon allen wrench 150mm 1 pc.</p> <p>SP010-90-004 Nylon brush fi 30x80mm 1 pc.</p> <p>SP010-90-001 Oilstone 200x50x25mm 1 pc.</p> <p>SP010-90-002 1l dispenser bottle 1 pc.</p>
✖	✖	✖
<p>Accessories SET 4 includes:</p> <p>SP010-23-600L Angle bracket 375x100x600mm left 2 pcs</p> <p>SP010-23-600R Angle bracket 375x100x600mm right 2 pcs</p> <p>SP010-30-005 Angle bracket 175x50x75 hole/slot 4 pcs</p> <p>SP010-30-013 Angle bracket 175x50x275mm hole/slot 6 pcs</p> <p>SP010-50-002 Universal stopper 225x50x25mm 4 pcs</p> <p>SP010-65-001A Prysm fi 60 90° 4 pcs</p> <p>SP010-70-001 180° mounting clamp with 300x300mm holder 10 pcs</p> <p>SP010-60-001 Rapid locking bolt fi 28x50mm 28 pcs</p> <p>SP010-90-003A Hexagon allen wrench 150mm 1 pc.</p> <p>SP010-90-004 Nylon bruschi fi 30x80mm 1 pc.</p> <p>SP010-90-001 Oilstone 200x50x25mm 1 pc.</p> <p>SP010-90-002 1l dispenser bottle 1 pc.</p>	<p>Accessories SET 5 includes:</p> <p>SP010-23-300L Angle bracket 275x100x300mm left 1 pc.</p> <p>SP010-23-300R Angle bracket 275x100x300mm right 1 pc.</p> <p>SP010-23-600L Angle bracket 375x100x600mm left 1 pc.</p> <p>SP010-23-600R Angle bracket 375x100x600mm right 1 pc.</p> <p>SP010-23-800L Angle bracket 375x100x800mm left 1 pc.</p> <p>SP010-23-800R Angle bracket 375x100x800mm right 1 pc.</p> <p>SP010-30-002 Angle bracket 175x50x175mm hole/slot 6 pcs</p> <p>SP010-30-005 Angle bracket 175x50x75 hole/slot 4 pcs</p> <p>SP010-50-002 Universal stopper 225x50x25mm 6 pcs</p> <p>SP010-50-014 Universal stop 500x100x25mm hole/slot 4 pcs</p> <p>SP010-70-001 180° mounting clamp with 300x300mm holder 12 pcs</p> <p>SP010-60-001 Rapid locking bolt fi 28x50mm 40 pcs</p> <p>SP010-90-003A Hexagon allen wrench 150mm 1 pc.</p> <p>SP010-90-004 Nylon bruschi fi 30x80mm 1 pc.</p> <p>SP010-90-001 Oilstone 200x50x25mm 1 pc.</p> <p>SP010-90-002 1l dispenser bottle 1 pc.</p>	<p>Accessories SET 6 includes:</p> <p>SP010-20-050 U-shape block 500x200x200mm 2 pcs</p> <p>SP010-20-100 U-shape block 1000x200x200mm 2 pcs</p> <p>SP010-23-300L Angle bracket 275x100x300mm left 2 pcs</p> <p>SP010-23-300R Angle bracket 275x100x300mm right 2 pcs</p> <p>SP010-23-600L Angle bracket 375x100x600mm left 2 pcs</p> <p>SP010-23-600R Angle bracket 375x100x600mm right 2 pcs</p> <p>SP010-30-002 Angle bracket 175x50x175mm hole/slot 8 pcs</p> <p>SP010-30-005 Angle bracket 175x50x75mm hole/slot 8 pcs</p> <p>SP010-30-013 Angle bracket 175x50x275mm hole/slot 4 pcs</p> <p>SP010-50-002 Universal stopper 225x50x25mm 8 pcs</p> <p>SP010-50-014 Universal stop 500x100x25mm hole/slot 4 pcs</p> <p>SP010-70-001 180° mounting clamp with 300x300mm holder 20 pcs</p> <p>SP010-60-001 Rapid locking bolt fi 28x50mm 46 pcs</p> <p>SP010-90-003A Hexagon allen wrench 150mm 1 pc.</p> <p>SP010-90-004 Nylon bruschi fi 30x80mm 1 pc.</p> <p>SP010-90-001 Oilstone 200x50x25mm 1 pc.</p> <p>SP010-90-002 1l dispenser bottle 1 pc.</p>

## Technical parameters

Size of the work surface	1400 x 1400 x 200mm
Made	casted
Material	EN-GJL-300 cast iron acc. to EN 1561
Table top thickness [mm]	25
Table horizontal precision [mm]	0.1/1000
Table vertical precision [mm]	0.1/200
Standard	D28 (drilled and milled holes 28mm diameter)
Carrying capacity	1000kg/rotator
Overall table height [mm]	1090mm
Supporting structure	Welding rotator
Top weight [kg]	650kg

NW ® is independent subject and not connected to ABITIG®, AMPHENOL®, ASPA®, BESTER®, BINZEL®, CEA®, CEBORA®, ESAB®, EWM®, FALTIG®, FRO®, FRONIUS®, HARRIS®, HYPERTHERM®, KJELLBERG®, L-TEC®, LINCOLN®, MAGNUM®, OTC®, SAF®, SHERMAN®, TELWIN®, THERMAL DYNAMICS®, TRAFIMET®, TUCHEL®.

Reference numbers and names belonged to above companies were called due to Property Right Law for buyer's convenience and they are related to code and spare part's description.

The products do not constitute an offer within the meaning of the Civil Code.